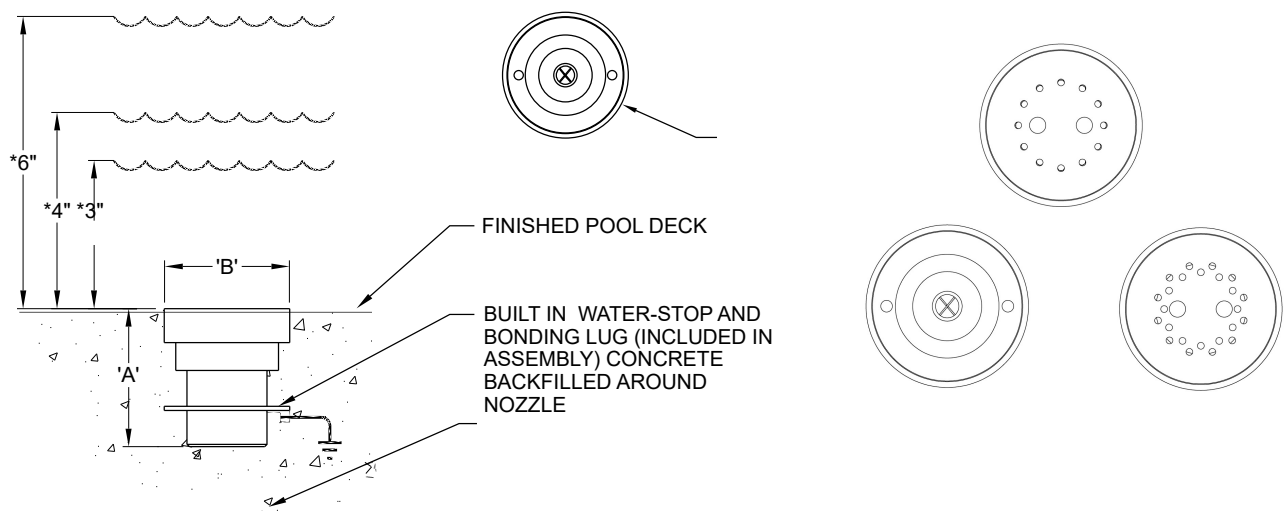


N-FM-100 Flush Mount Nozzle(Zero Entry)



N-FN-100 ELEVATION

RECESSED TOP FOR EASE OF REMOVAL

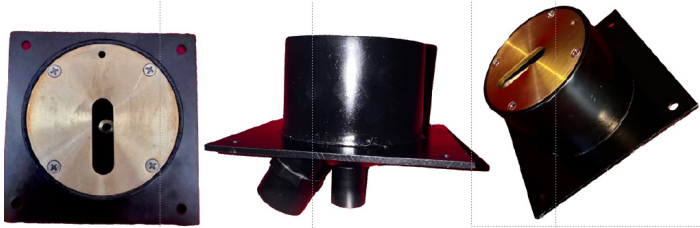


TECHNICAL AND HYDRAULIC DATA									
		DIMENSIONS		SPRAY HEIGHT/PERFORMANCE					
MODEL NO.	(F) N.P	'A'	'B'	*SUBM. (INCHES)		8"	12"	18"	24"
N-FM-100	1"	2-5/16"	2-5/8"	6"	GPM	22	25	34	44
					HEAD (ft.)	14'	20'	30'	38'
				4"	GPM	18	21	29	36
					HEAD (ft.)	8'	12'	19'	26'
				3"	GPM	16	19	23	29
					HEAD (ft.)	7'	11'	16'	23'

SPECIFICATION DATA: Flush Foam Nozzle has machined brass or stainless steel construction, machined jet orifices, a removable recessed cap for ease of cleaning, with built in waterstop fitting and a 1" (f) N.P.T. threaded connection. When submerged, this water level dependent nozzle creates a vertical mound of water that pushed through shallow water.

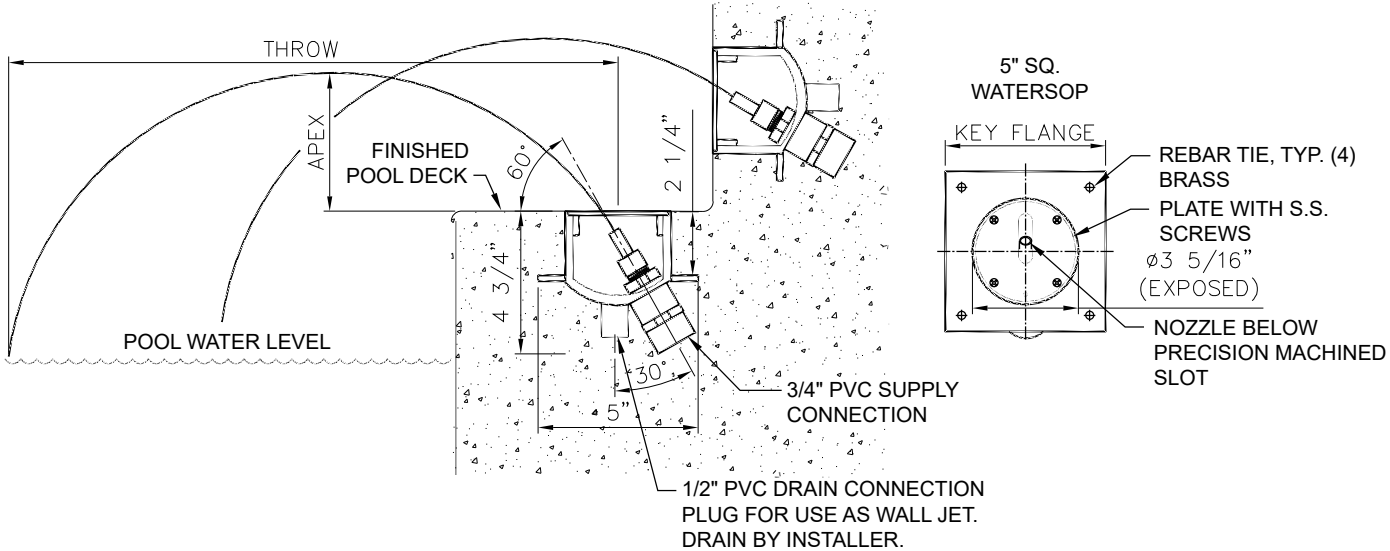
- NOTES:**
- 1. Available in Brass or Stainless Steel
 - 2. Nozzle Interchangeable in the field

N-WJDJ Waterjet/Deckjet



ELEVATION

PLAN VIEW



HYDRAULIC DATA											
Product Name	PVC Socket Size	Orifice Size	Throw Angle		Distance	6'	8'	10'	12'	14'	16'
			Min	Max	Apes @ 45°	1.5'	2'	2.5'	3'	3.5'	4'
NWJDJ-PDJ-187	3/4"	3/16"	45°	75°	Gpm	1.3	1.5	1.8	2.1	2.2	2.3
NWJDJ-PDJ-250	3/4"	1/4"	45°	75°	Gpm	2.0	2.5	2.8	3.1	3.4	3.6
NWJDJ-PDJ-312	3/4"	5/16"	45°	75°	Gpm	2.6	3.0	3.6	4.2	5.1	6.0

SPECIFICATION DATA: The Precision 'Deck Jet' assembly includes a high-strength Schedule 40 thermoplastic niche body with an integrated waterstop/key flange, rebar attachment holes, and a brass adjustable precision jet. It features a flush brass cover plate secured with stainless steel fasteners, a 3/4" PVC socket supply connection, and a 1/2" PVC spigot drain connection.

- NOTES:**
- 1. Orifice sizes are interchangeable in the field
 - 2. Requires PVC primer and HD PVC Glue
 - 3. Works with standard filter screening
 - 4. Faceplate available in Brass and Stainless Steel

