

IDEAL FOUNTAINS™

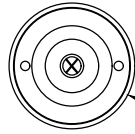
Shaping Of Water™

1-833-433-2569

N-FM-100 FLUSH FOAM NOZZLE

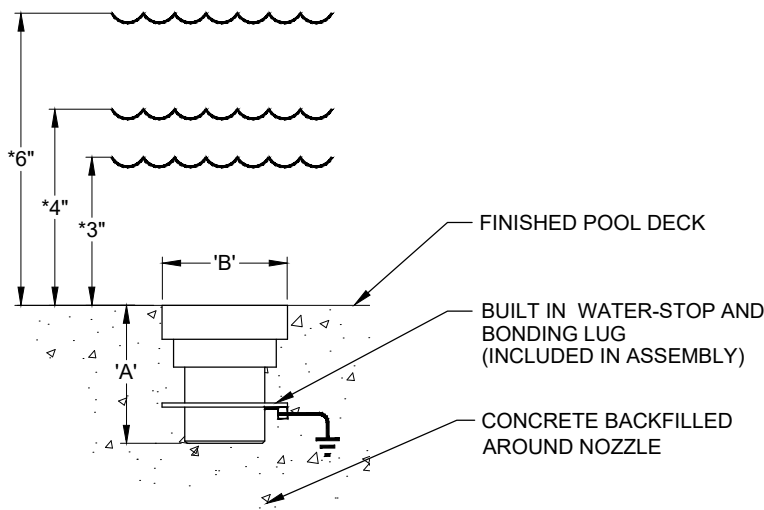


N-FM-100 PLAN



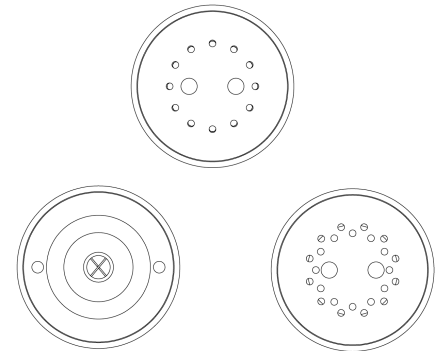
RECESSED TOP FOR EASE OF REMOVAL

N-FM-100 ELEVATION



Interchangeable tops Jet Cluster, APJ, Crown Jet

TECHNICAL AND HYDRAULIC DATA									
MODEL NO.	(F) N.P	DIMENSIONS		*SUBM. (INCHES)	SPRAY HEIGHT/PERFORMANCE				
		'A'	'B'		8"	12"	18"	24"	
N-FM-100	1"	2-5/16"	2-5/8"	6"	GPM	22	25	34	44
					HEAD (ft.)	14'	20'	30'	38'
				4"	GPM	18	21	29	36
					HEAD (ft.)	8'	12'	19'	26'
				3"	GPM	16	19	23	29
					HEAD (ft.)	7'	11'	16'	23'



SPECIFICATION DATA: Flush Foam Nozzle has machined brass or stainless steel construction, machined jet orifices, a removable recessed cap for ease of cleaning, with built in waterstop fitting and a 1" (f) N.P.T. threaded connection. When submerged, this water level dependent nozzle creates a vertical mound of water that pushed through shallow water.

- NOTES:**
1. Available in Brass or Stainless Steel
 2. Nozzle Interchangeable in the field